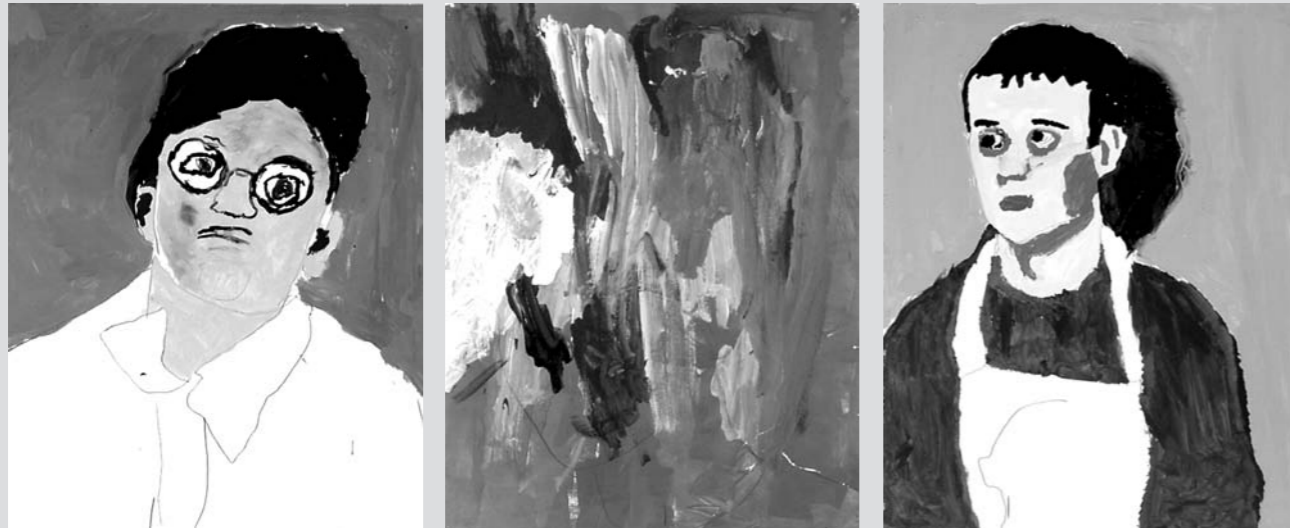


art works



annual report

2002 – 2003

Art Works

Art Works is a visual arts organisation which creates opportunities for young people and adults who have complex impairments to communicate and express themselves through making art.

We also attempt to raise awareness, understanding and tolerance of difference through exhibitions, films and publications. Art Works is led by visual artists and is based in Hastings, East Sussex.

Established in 1997, Art Works was awarded charitable status in 2000. To date we have received funding through the A4E express programme, the Millennium Festival Fund and the Regional Arts Lottery Programme, and were granted RFO status by Southern and South-East Arts in 2001.

We deliver visual art based residencies and workshops in special schools, day centres and other venues around the south-east and in London. We show the results of projects through publications, films and installations. Our work has been showcased at the Brighton Festival, the Millennium Dome and the De La Warr Pavilion, as well as in schools and hospitals. Our current projects include a year long residency, in three SLD schools in East Sussex and Hackney, London, commissions for signage and art installations in a new special school building in West Sussex and the advancement of plans for permanent premises with dedicated and accessible work spaces.



EYDP Workshops. Brussels. December 2002

contents

- Art Works: what we do page 1
- Selected projects pages 2 – 4
- Who we are and Acknowledgments page 5
- Accounts page 6
- Current and Upcoming page 7

July 2002 to September 2003

Project India

Project India is an innovative arts and education project run by Art Works in partnership with the co-located Hazel Court Secondary School (SLD) and The Causeway School in Eastbourne.

Project India has provided a unique opportunity to work consistently on inclusive creative activities over a three year period with secondary age pupils.

The activities and form of Project India have been increasingly influenced by the evolving emphasis upon 'access' for the young people involved in the project. The complex needs of pupils at Hazel Court School have led the Art Works project team to evolve approaches and methodologies that most clearly and appropriately meet those needs.

The artists involved in delivering the project have gained specialised experience and skills during the first two years of the project. This in turn has led Art Works to recognise the unique nature of its work and its potential for contributing to educative and creative provision for people who have complex needs.

During the second year of the project work involved an emphasis on the use of new media and the manipulation and construction of the 'environment' of workshops. We have found this very effective in aiding concentration of both mainstream and SLD pupils who require high levels of support and a particular kind of 'space' in order to achieve the necessary focus to 'make' something and/or engage on their own terms.

Art Works structured proposals and plans for the final year of the project according to available resources in direct response to the findings of this and other Art Works projects conducted since October 2000.



Self-Portrait paintings. Project India 2003

August 2002

Torfield School Summer Workshops

Art Works ran a 5 day summer art workshop for children who have autism at Torfield School, Hastings. This was a pilot project to inform a longer term working partnership between the school and Art Works. The aims of the project were:

- to enable the young people involved to experience and engage with a wide range of art media;
- to provide the opportunity for young people to be proactive in creating, modifying and influencing the space in which they work.

Art Works provided a temporary, outdoor space in the playground where the workshops took place. The workshops focused on designing, constructing, painting and filming temporary structures and spaces in which the children could feel comfortable and able to operate. We commissioned the construction of a Geodesic Dome for this and future workshops.



December 2002

European Year of Disabled People Workshop

Art Works was commissioned by The European Commission to run a day of special art workshops for the launch of European Year of Disabled People 2003. Young people from fifteen European countries were invited to take part in the workshops in Brussels during December 2002. The artworks produced during the day were then used for publicising EYDP across Europe.

The workshops took place at the 'salle polyvalente' at the Cartoon Museum in Brussels and aimed to:

- enable a large number of young people of different nationalities and abilities to work together
- provide creative activities which were accessible and enjoyable
- celebrate the creative achievements and abilities of all involved

The workshops were organised around six colours of the spectrum and the children divided into these colour groups and provided with corresponding coloured t-shirts. Six large rolls of paper were laid out on the hall floor and each group then worked on the each sheet in turn producing a series of six vibrant, coloured paintings. Hundreds of photographs were taken throughout the day and the event was filmed by a number of TV crews from different European countries.

art works centre

ongoing

Art Works is developing a major capital project to establish a vibrant and inclusive cultural resource in central Hastings to:

- Increase the choice in provision of high quality, specialised and accessible creative opportunities for people who have disabilities and other socially excluded groups;
- Expand and develop the range of services Art Works can offer with a dedicated space;
- Provide activities and events in an environment focused on the needs of the client groups;
- Create a centre for art and learning for participants, students and professionals;
- Strengthen Art Works potential as a partner in research and development with the new media sector.

We are now moving into phase two of the project and, subject to confirmation of funding applications due in December 2003, we will: employ a project manager, secure the site, commission architects /consultants, undertake a final feasibility and first stage design to planning and proceed with major capital fund raising of up to £1.5m.

organisation development

July 2002 to September 2003

By the summer of 2002, Art Works was entering a new phase in its development. In common with many small organisations founded on the imagination and energy of a group of artists, enthusiastically welcomed by their target constituency and in increasing demand, Art Works was asking itself some inevitable questions: What do we want to achieve in the years ahead? Who do we want to work with? How big do we want to grow? How do we grow while protecting the ethos of the organisation?

Art Works applied to the Regional Arts Lottery Programme and secured a grant to pay for an independent review of its operating structure and systems and the production a business plan to guide the next stage of its development.

Art Works embraced the review process wholeheartedly and improvements to structures and systems have already been implemented.

The review was facilitated by Phyllida Shaw, supported by John Sharples in the production of financial projections for the business plan.

Art Works Income and Expenditure for the Year Ending March 2003

Income	2003	2002	£
public	60650		37850
private	28800		26537
Donations	500		1200
Earned	9886		7648
Interest	40		172
	99876		73407
Expenses			
Artists fees	17406		29958
Equipment	9996		11380
Materials	3870		2898
Premises	5502		3978
Admin costs	3449		2160
Documentation	2386		5488
Travel costs	1824		830
Insurance	660		647
Training	884		170
Salaries	34831		31700
Professional fees	9613		1714
sundry	327		585
	90748		91507
summary balance sheet			
Fixed assets	9996		10329
Cash funds	19095		8714
	<u>29091</u>		<u>19043</u>
Less liabilities	1508		588
Net assets	<u>27583</u>		<u>18455</u>
Our Funders			
Arts Council England	35650		16650
East Sussex County Council	—		700
EE Roberts Charitable Trust	300		
Equitable Charitable Trust	17000		16500
Hastings Borough Council	500		3000
Hastings Community Chest	3000		
Lacey Tate	500		
Mencap	1000		2000
Magdalen and Lasher Charity	3000		2500
Millennium Festival Fund	—		2500
Paul Hamlyn Foundation	5000		
Roy Hudson Trust	500		
Scope	—		8000
South East Arts	21500		15000
Woodward Charitable Trust	1500		

current and upcoming

Crawley – new school works

Art Works have been commissioned to create a number of permanent art installations in a new school building in Crawley, West Sussex. The project will begin with a series of workshops with pupils from two special schools that will merge to occupy the new building and will be completed when the artworks are installed and the school is opened in Spring 2004.

The first commission is for a ceramic tile installation in the new hydrotherapy pool.

The second is an integral and permanent system of signage incorporating symbols, words and images to help pupils and the wider school community navigate their way around the new building and related to this a large 'Welcome' installation of images in both the primary and secondary entrance lobbies of the school.

project domain

Project Domain is an exciting and challenging project that will enable Art Works to develop a relationship with three special schools (in Hastings, Brighton and London) during the course of academic year 2003 to 2004. Through a series of two-week visits, plus a range of formal and informal teacher development, the artists, pupils and teachers will have the opportunity to learn how to work effectively together, towards shared creative and educational objectives.

At the heart of Project Domain is Art Works' portable venue – a geodesic dome made of wood and canvas. The dome becomes an unusual and stimulating temporary art space pitched in the school grounds. Workshop activities will include painting, drawing, construction, digital photography and film, and will be individually tailored to meet the needs of the participants and to enhance the existing curriculum. Alongside the workshops for pupils, the artist team will run INSET and family events. In addition to the work created in the practical sessions, some of which will be installed within the school buildings, four videos will be made using the documentary footage of the schools' experiences. There will be one film made per school (a copy of which will be held by them) and a general documentary on Project Domain for wider public distribution.

art works is

artists: Kate Adams, Jonathan Cole, Caroline Le Breton, Tim Corrigan **administrator:** Catherine Harvey

trustees:

Acting Chair: Marion Purdey

Vice Chair: Annette Barton – HBC Councillor and teacher at Torfield School, Hastings

Treasurer: Lorna Thursfield – Management accountant

Shirley Franklin – Secretary

George Adams – Architect

acknowledgments

All our projects are made possible through the collaboration and participation of many people. Art Works would particularly like to acknowledge and thank:

all the young people and adults who took part in our projects and engaged in such positive and creative ways, including those at Hazel Court Secondary School and The Causeway School, Eastbourne; Torfield School, Hastings; the young people who took part in European Year of Disabled People launch workshop in Brussels; and the families, staff, carers and advocates of all the participants who help to facilitate our projects.

Special thanks to:

Adams and Sutherland, Architects; Deborah Rawson, Director of Education Through Art; Mr Osaki, Managing Director of Kuretake; Graham Lee; GH Graphics, Hastings and Phyllida Shaw, researcher and writer.

Paul Hamlyn Foundation
Magdalen and Lasher Charity
The Woodward Trust
Mrs E.E Roberts Charitable Trust
Roy Hudson Trust
Mrs A Lacey-Tate Trust



Art Works
7, Cambridge Road
Hastings TN34 1DJ
tel/fax 01424 423555
email: art.works@virgin.net
www.projectartworks.org
Registered Charity Number: 1084114